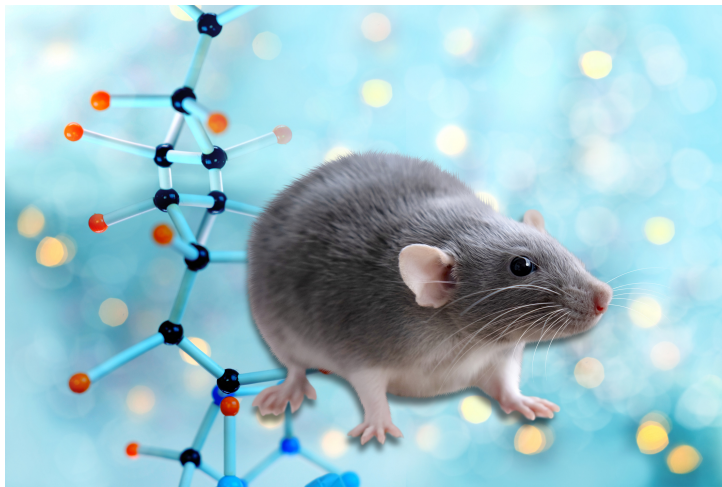




B6(Cg)-Dot1l/SyjoJ: Reqmt for Dot1l in Murine Postnatal Hematopoiesis and Leukemogenesis by MLL Translocation

TECHNOLOGY NUMBER: 2021-330



Technology ID

2021-330

Category

Research Tools and Reagents

Inventor

Stephanie Jo

Further information

Emily Bowers

bowersea@umich.edu

Learn more



INNOVATION

Dot1l^{F/F} mice have loxP sites flanking exon 2 of the Dot1l gene, making them useful for studying embryonic development, prenatal hematopoiesis, leukemia, and T cell development and differentiation.

ADDITIONAL DETAILS

Jackson <https://www.jax.org/strain/035909>