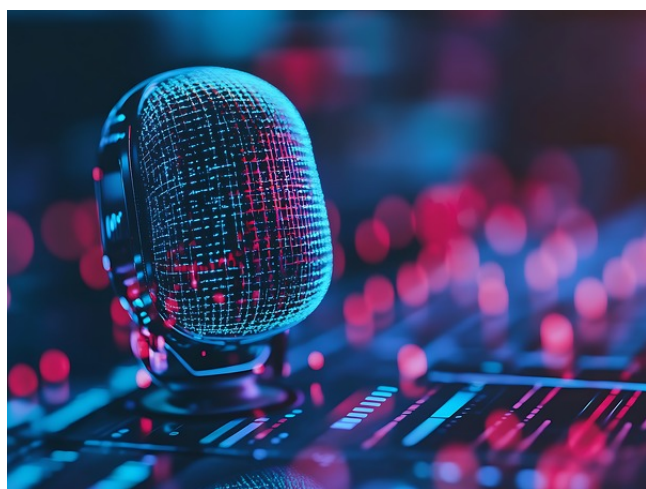




Generative AI Summarization for Dynamic Tracking of Clinical Symptoms (Accelerate Blue)

TECHNOLOGY NUMBER: 2024-382



Accelerate Blue Foundry - 2025 (Life Sciences)

OVERVIEW

inMyVoice is a digital platform that uses daily one-minute voice diaries and advanced AI summarization to give clinicians a detailed, accurate view of a patient's recent mental health journey, streamlining diagnosis and care for conditions like depression, anxiety, and more.

DESCRIPTION

inMyVoice replaces the traditional method of asking patients to remember and report their symptoms during clinic visits with a simple app that prompts patients to record a short voice diary each day. The app uses generative AI to automatically transcribe these recordings, extract important themes, organize information, and highlight subtle details that might be missed in a typical conversation. This enables clinicians to quickly and easily review a clear, data-driven summary of the patient's experiences, reducing session time spent on information gathering and increasing accuracy. Unlike standard practice, which relies on memory and can be incomplete or inaccurate, inMyVoice gives both patients and clinicians a more complete and reliable picture of mental health trends over time—and does so with minimal effort for both parties.

Technology ID

2024-382

Category

Diagnostics
Life Sciences
Software & Content
Accelerate Blue Foundry -
2025/Life Sciences

Inventor

Chandra Sripada

Further information

Drew Bennett
andbenne@umich.edu

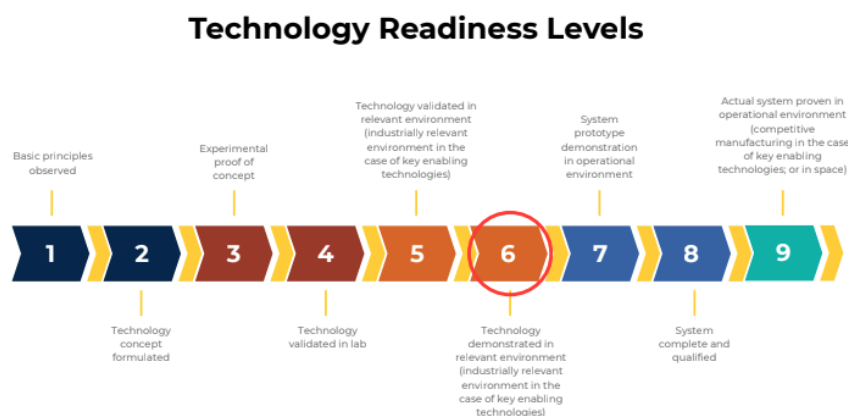
View online



VALUE PROPOSITION

- Revolutionizes clinical workflows by eliminating the inefficiency and inaccuracy of traditional retrospective patient reporting through daily, AI-processed voice diaries.
- Offers clinicians highly organized, actionable insights and highlights nuanced details, empowering better, faster, and more personalized care.
- Scalable and adaptable across a broad spectrum of mental health conditions and care settings, enabling high-impact use from small practices to large health systems.

TECHNOLOGY READINESS LEVEL



A working, fully functional prototype of the app has already been developed. The app has been used with 80 human participants with clinical conditions in 30- or 60 day-studies. A validation study with trained human raters demonstrates app-generated clinical reports have excellent accuracy, informativeness, and helpfulness. They also receive substantially higher ratings than human-generated clinical reports that are based on the same daily diary data.

INTELLECTUAL PROPERTY STATUS

Patent application pending.

MARKET OPPORTUNITY

The need for more accurate, efficient patient monitoring in mental health care is immense, especially as demand for psychiatric services rises and provider time becomes increasingly limited. inMyVoice can vastly improve practices in psychiatry, primary care, telemedicine, and behavioral health management, with potential for integration into larger health systems and digital therapeutics platforms. Its application addresses a critical market gap in real-world symptom tracking and clinician decision support, reducing clinician burnout and improving patient outcomes. The rapid adoption of digital health and shift toward personalized care—reflected in a mental health app market projected to surpass \$17 billion by 2030—supports strong growth potential for this technology.