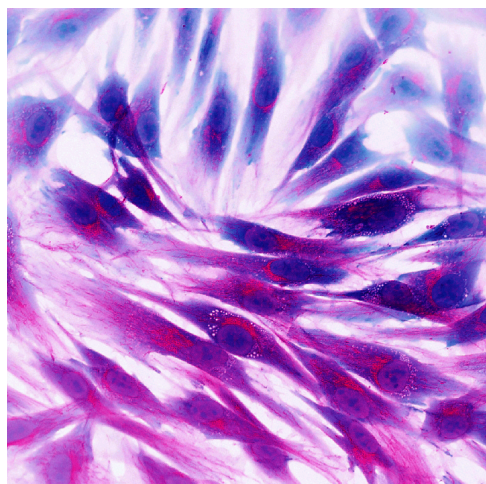




# GRASP55 and GRASP65 HeLa and HEK293 Knockout Cell Lines

TECHNOLOGY NUMBER: 2018-462



## OVERVIEW

These cell lines, built upon HeLa and HEK293 parent lines, have GRASP65, GRASP55, or both knocked out of the cell line. These are good models for cytoskeleton, membrane trafficking, and Golgi structure and function studies.

## ADDITIONAL DETAILS

Available from: CancerTools UK

<https://ximbio.com/reagent/157710/hek293-grasp55-knockout-cell-line>

<https://ximbio.com/reagent/157711/hek293-grasp65-knockout-cell-line>

<https://ximbio.com/reagent/157712/hek293-grasp55-and-grasp65-double-knockout-cell-line>

<https://ximbio.com/reagent/157706/hela-grasp55-knockout-cell-line>

<https://ximbio.com/reagent/157707/hela-grasp65-knockout-cell-line>

<https://ximbio.com/reagent/157708/hela-grasp55-and-grasp65-double-knockout-cell-line>

## Technology ID

2018-462

## Category

Research Tools and Reagents  
Life Sciences

## Inventor

Yanzhuang Wang

## Further information

John Corthell  
[corthell@umich.edu](mailto:corthell@umich.edu)

## Learn more

