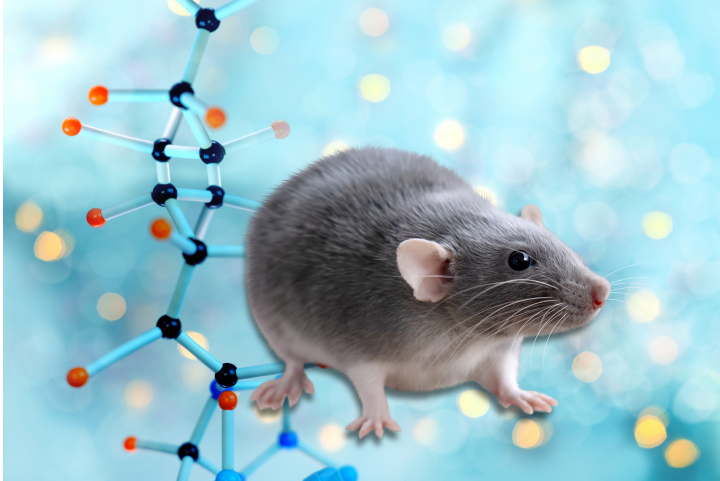




# hProCpepSfGFP Transgenic Mouse

TECHNOLOGY NUMBER: 2021-061



## Technology ID

2021-061

## Category

Research Tools and Reagents

## Inventor

Shusheng Lu  
Robert Kennedy  
Shaoshuai Zhu  
Arfah Anjum  
Peter Arvan  
Leena Haataja  
Dennis Larkin

## Further information

Emily Bowers  
[bowersea@umich.edu](mailto:bowersea@umich.edu)

## INNOVATION

The hPro-CpepSfGFP transgene is composed of a human wildtype proinsulin tagged with superfolder green fluorescent protein (sfGFP) inserted in frame into the C-Peptide domain of human WT proinsulin. These hPro-CpepSfGFP mice are useful for fluorescence visualization of pancreatic C-peptide by direct observation of the pancreas surface.

## ADDITIONAL DETAILS

Jackson <https://www.jax.org/strain/035812>

## Learn more

