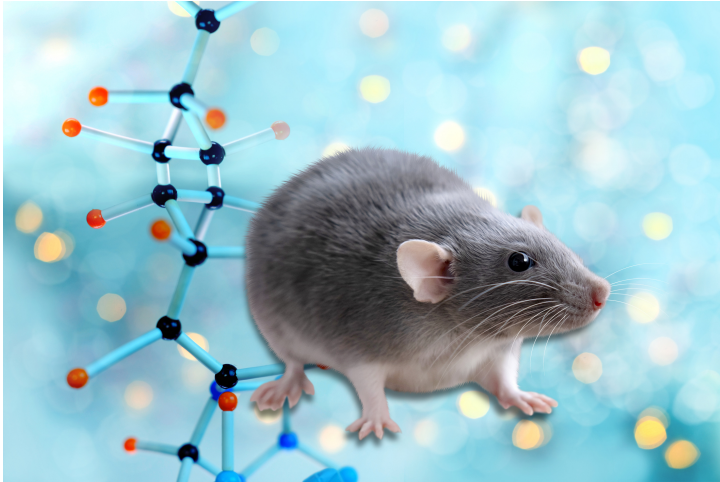




# Kallikrein 4 (Klk4) Knockout LacZ Knockin Mouse Model

TECHNOLOGY NUMBER: 6388



## INNOVATION

Kallikrein 4 (Klk4) is a serine protease critical to the processing of enamel matrix proteins and maturation of dental enamel. This mouse model has the Klk4 gene replaced by NLS LacZ. The mouse model has allowed the study of Klk4 expression and function. Furthermore, the mouse model recapitulates human hypomaturation amelogenesis imperfecta condition and can be used for testing experimental strategies to rescue enamel maturation defects.

## Technology ID

6388

## Category

Research Tools and Reagents

## Inventor

James Simmer

Jan Hu

## Further information

Emily Bowers

[bowersea@umich.edu](mailto:bowersea@umich.edu)

## Learn more

