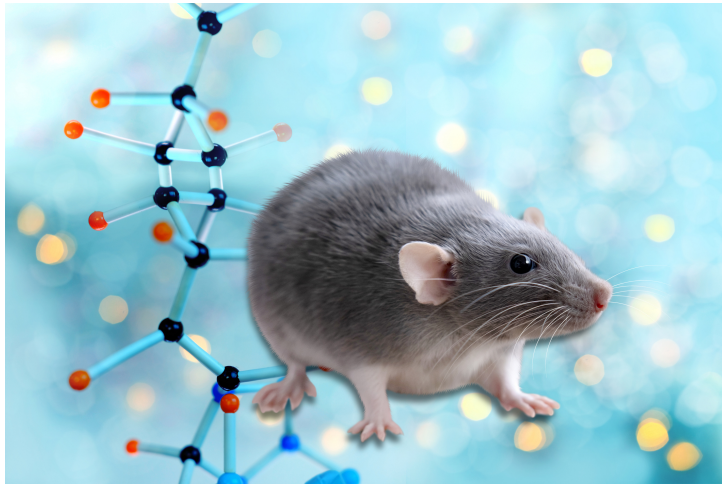




Mice Genetically Engineered to Lack the Alpha and Delta Isoforms of SH2B1

TECHNOLOGY NUMBER: 2021-493



INNOVATION

The Sh2b1DEL α/δ knock-out allele lack the brain-specific alpha and delta Sh2b1 isoforms, but retain the widely expressed beta and gamma isoforms. Sh2b1DEL α/δ mice exhibit decreased food intake, protection from weight gain on standard and high-fat diets, and improved glucose homeostasis. These mice may be useful in the study of obesity and metabolism.

ADDITIONAL DETAILS

Jackson <https://www.jax.org/strain/036415>

Technology ID

2021-493

Category

Research Tools and Reagents

Inventor

Anabel Flores Arenas

Lawrence Argetsinger

Christin Carter-Su

Martin Myers

Thomas Saunders

Further information

Emily Bowers

bowersea@umich.edu

Learn more

