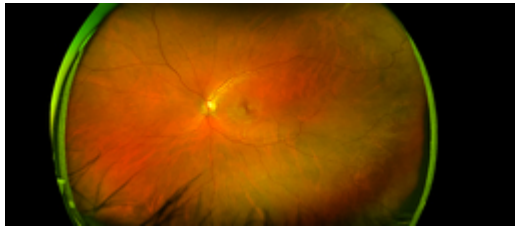




Michigan Retinal Degeneration Questionnaire

TECHNOLOGY NUMBER: 2021-065



OVERVIEW

Validated Patient Reported Outcomes (PRO) measure

- Focused on conditions of inherited retinal degeneration (IRDs)
- Evaluates visual function

LICENSING INQUIRIES: Effective January 1, 2024 The University of Michigan has partnered with [MAPI Research Trust](#) for the licensing, management and distribution of all Michigan developed Clinical Outcome Assessments (COA's). MAPI is the recognized global leader in the COA space and has exceptional resources to assist with scale based distribution, instructional design, documentation as well as deep partnerships with [ICON](#) language services for translation services. All inquiries for this measure, regardless of if it is a research or commercial request should be directed to MAPI.

MAPI Research Trust - [Michigan Retinal Degeneration Questionnaire \(MRDQ\)](#)

BACKGROUND

The Michigan Retinal Degeneration Questionnaire (MRDQ) is a validated patient reported outcomes measure designed in accordance with U.S. FDA guidelines, specifically for conditions of inherited retinal degeneration (IRDs) that can be applied to therapeutic clinical trials.

The MRDQ contains 59 questions and is designed to be interviewer-administered in around 20-30 minutes and evaluates visual function across seven physiologically relevant visual function domains:

- Central
- Color
- Scotopic
- Mesopic
- Photopic
- Photosensitivity

Technology ID

2021-065

Category

Content
Software & Content

Inventor

Chris Andrews
David Musch
Gabrielle Lacy
Kanishka Jayasundera
Maria Fernanda Abalem de Sa Carricondo

Further information

Drew Bennett
andbenne@umich.edu

Learn more



The psychometrically validated patient-reported outcomes measure was reduced to a 59-item questionnaire measuring 7 unidimensional domains. A total of 39 items were removed due to poor factor loading, low item-information, poor person-ability differentiation, or high item-level interdependence. This novel questionnaire produces reliable domain scores for person-ability that exhibit low test-retest variability across repeated administration.

The final PRO questionnaire, known as the Michigan Retinal Degeneration Questionnaire (MRDQ) is psychometrically validated and available for use in therapeutic evaluation for patients with IRDs. Each domain is scored using an independent person-disability measure. Instructions on administering and scoring the MRDQ are included with license.

ADDITIONAL DETAILS

LICENSING INQUIRIES: Effective January 1, 2024 The University of Michigan has partnered with [MAPI Research Trust](#) for the licensing, management and distribution of all Michigan developed Clinical Outcome Assessments (COA's). MAPI is the recognized global leader in the COA space and has exceptional resources to assist with scale based distribution, instructional design, documentation as well as deep partnerships with [ICON](#) language services for translation services. All inquiries for this measure, regardless of if it is a research or commercial request should be directed to MAPI.

MAPI Research Trust - [Michigan Retinal Degeneration Questionnaire \(MRDQ\)](#)

References

1. Lacy, Gabrielle D, et al. , The Michigan Retinal Degeneration Questionnaire: A Patient-Reported Outcome Instrument for Inherited Retinal Degeneration
2. Lacy, Gabrielle D, et al. , Content generation for patient-reported outcome measures for retinal degeneration therapeutic trials