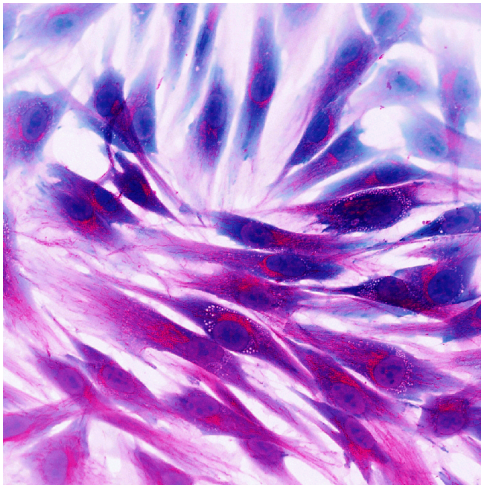




Monogenic Disease-Specific Human Embryonic Stem Cells and Cell Replacement Therapies

TECHNOLOGY NUMBER: 5492



OVERVIEW

This is an established collection of well-characterized human embryonic stem cells. There are 77 cell lines in all and this includes both disease model and control cell lines.-specific human embryonic stem cell lines.

ADDITIONAL DETAILS

Available at: MStem (<https://www.mstemcell.org/>)

Technology ID

5492

Category

Research Tools and Reagents
Life Sciences

Inventor

Gary Smith

Further information

John Corthell
corthell@umich.edu

Learn more

