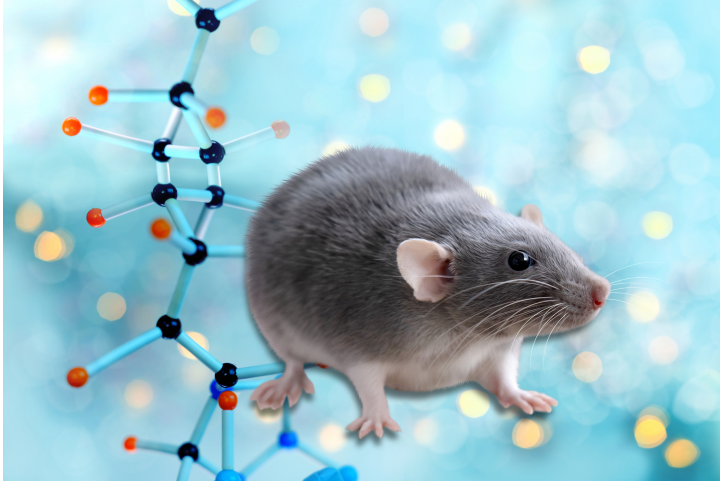




Mouse Model 2 of SCN8A Epilepsy

TECHNOLOGY NUMBER: 7008



INNOVATION

The SCN8A 2 mouse model carries a human patient mutation, Arg1872Trp, inserted into the mouse Scn8a gene. The mutant gene can be turned on by Cre. The mice will serve as a model for testing potential therapeutic drugs.

Technology ID

7008

Category

Research Tools and Reagents

Inventor

Miriam Meisler

Further information

Emily Bowers

bowersea@umich.edu

Learn more

