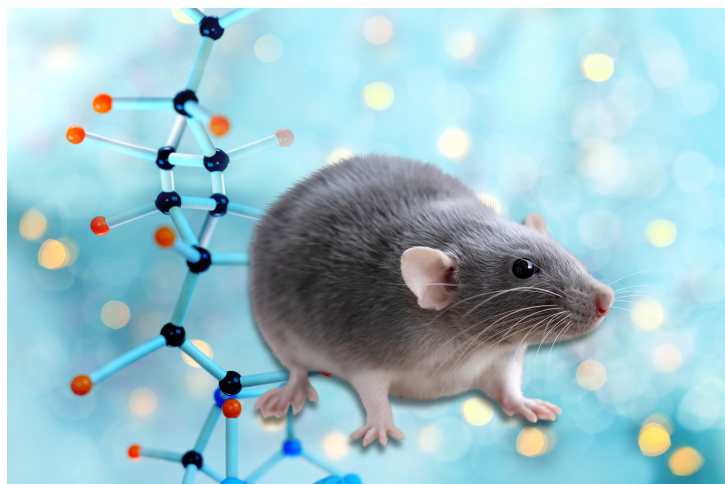




Mouse Model of Reversible Central Melanocortin Deficiency and Obesity

TECHNOLOGY NUMBER: 5635



INNOVATION

This technology is a reversible knockout-mouse model of early onset obesity. These mice are unable to express the proopiomelanocortin gene (Pomc) in hypothalamic neurons (arcPomcKO) but maintain normal pituitary Pomc expression. ArcPomcKO mice are hyperphagic and extremely obese due to central anorexigenic melanocortin deficiency.

Technology ID

5635

Category

Research Tools and Reagents

Inventor

Marcelo Rubinstein

Viviana Bumanschy

Flavio DeSouza

Malcolm Low

Further information

Emily Bowers

bowersea@umich.edu

View online

