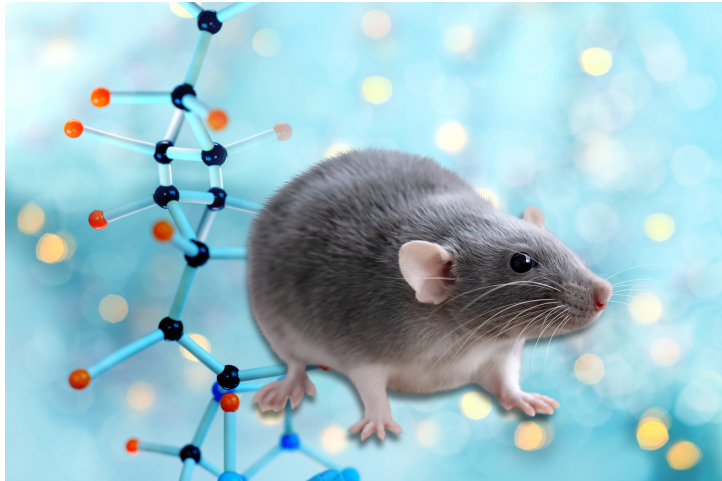




Mouse Model of SCN8A Epilepsy

TECHNOLOGY NUMBER: 6381



INNOVATION

The SCN8A mouse model carries a human patient mutation, N1768D, inserted into the mouse Scn8a gene. The mice exhibit spontaneous epilepsy seizures, that make them useful for testing potential therapeutic drugs.

Technology ID

6381

Category

Research Tools and Reagents

Inventor

Miriam Meisler

Further information

Emily Bowers

bowersea@umich.edu

Learn more

