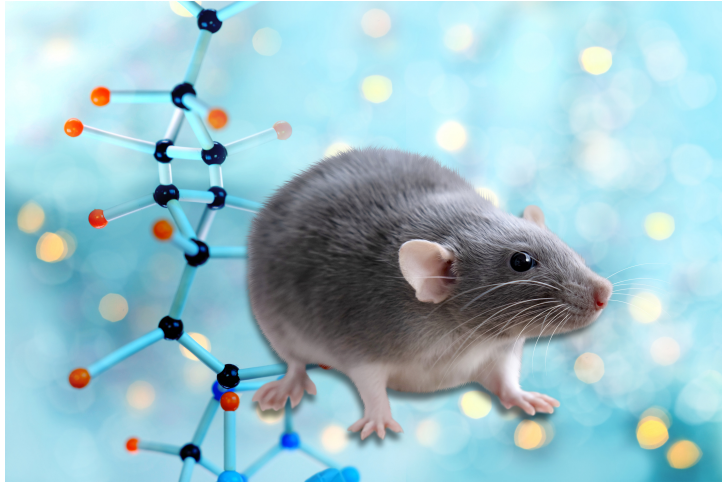




Mouse Models for Developmental Biology Research (Ash1l gene trapped)

TECHNOLOGY NUMBER: 2015-494



INNOVATION

This gene trap mutation of the Ash1l gene is a hypomorphic allele. These mice may be useful for studying the reproduction (fertility), and early embryonic growth and development.

ADDITIONAL DETAILS

Jackson <https://www.jax.org/strain/028220>

Technology ID

2015-494

Category

Research Tools and Reagents
Life Sciences

Inventor

Sally Camper

Further information

Emily Bowers
bowersea@umich.edu

Innovation Partnerships Tech
Marketing Team
IPInventions@umich.edu

[View online](#)

