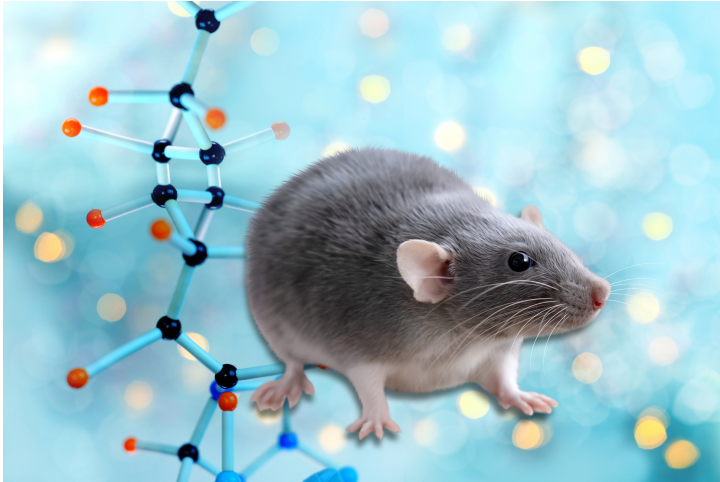




Mouse Models for Developmental Biology Research (Cga knock-out)

TECHNOLOGY NUMBER: 2015-490



INNOVATION

These Cga knock-out mice exhibit severe hypothyroidism resulting in dwarfism. They are suitable for use in applications related to the study of the role of pituitary thyrotropin (TSH) and gonadotropins (LH and FSH) in thyroid and gonadal development.

ADDITIONAL DETAILS

Jackson <https://www.jax.org/strain/002494>

Technology ID

2015-490

Category

Research Tools and Reagents

Inventor

Sally Camper

Further information

Emily Bowers

bowersea@umich.edu

Learn more

