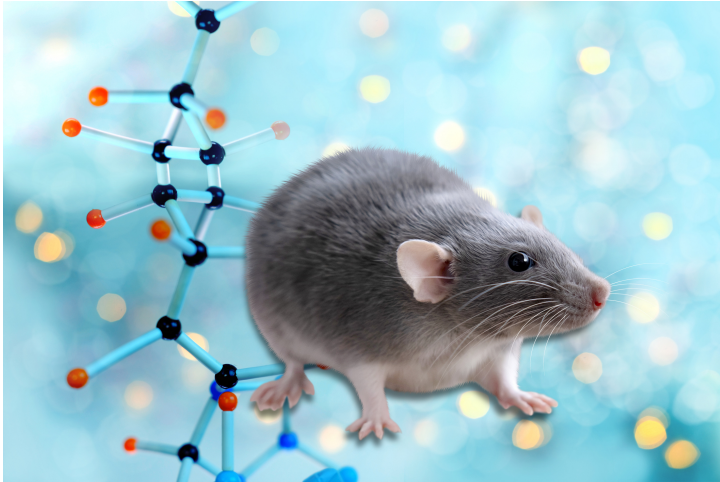




Mouse Models for Developmental Biology Research (Kcp knock-out)

TECHNOLOGY NUMBER: 2015-485



INNOVATION

The Kcp gene is disrupted by an inserted lacZ sequence in this line. These mutant mice may be useful for studying the pathology of renal fibrotic disease, as well as the role of KCP in bone morphogenetic protein (BMP) signaling during embryonic development, differentiation and disease.

ADDITIONAL DETAILS

Jackson <https://www.jax.org/strain/018296>

Technology ID

2015-485

Category

Research Tools and Reagents

Inventor

Gregory Dressler

Further information

Emily Bowers

bowersea@umich.edu

Learn more

