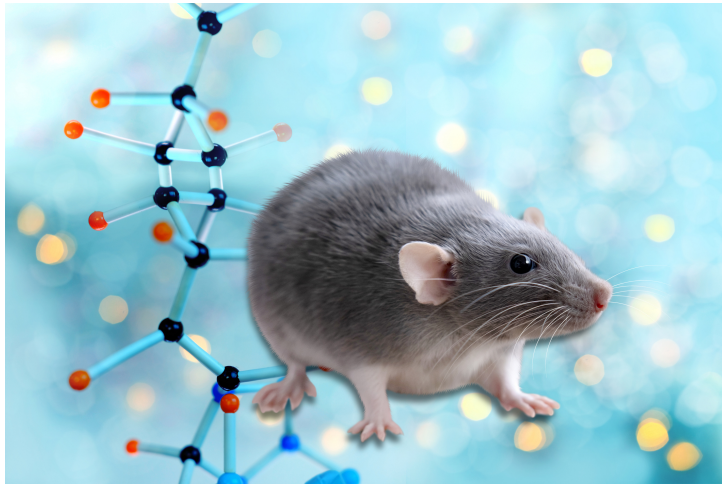




Mouse Models for Developmental Biology Research (Lhb-cre)

TECHNOLOGY NUMBER: 2015-492



INNOVATION

These transgenic mice express Cre recombinase under the control of the bovine LHB, luteinizing hormone beta polypeptide promoter. This strain represents an effective tool for generating tissue specific-targeted mutants that would be useful in the study of developmentally critical gene function in the pituitary.

ADDITIONAL DETAILS

Jackson <https://www.jax.org/strain/009643>

Technology ID

2015-492

Category

Research Tools and Reagents

Inventor

Sally Camper

Further information

Emily Bowers

bowersea@umich.edu

Learn more

