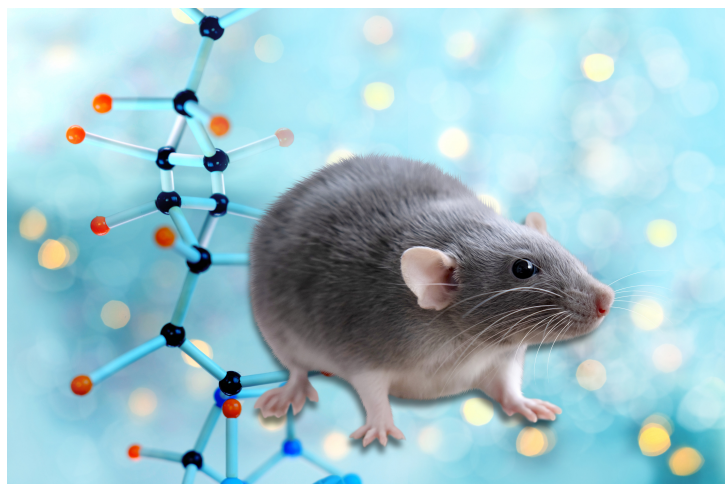




Mouse Models for Developmental Biology Research (Msx2-creER)

TECHNOLOGY NUMBER: 2015-489



INNOVATION

This Msx2-creERT2 mutant mouse strain, carrying a transgene with tamoxifen-inducible Cre recombinase under the control of the mouse Msx2 (msh homeobox 2) promoter and enhancers, may be useful for generating targeted mutants specific to the apical ectodermal ridge (AER) and its underlying mesenchyme of the developing limb, and in studies of bone development and BMP signaling.

ADDITIONAL DETAILS

Jackson <https://www.jax.org/strain/032102>

Technology ID

2015-489

Category

Research Tools and Reagents

Inventor

Noriaki Ono

Further information

Emily Bowers

bowersea@umich.edu

[View online](#)

