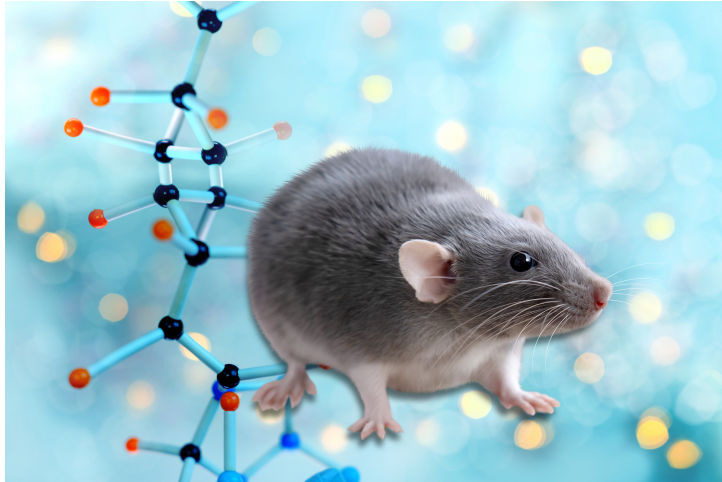




## Mouse Models for Developmental Biology Research (Pax2tm1Gdr)

TECHNOLOGY NUMBER: 2015-486



### INNOVATION

This hypomorphic knock-in strain has its Pax2 gene disrupted by an EGFP sequence. These mice may be useful for studying the developing intermediate mesoderm (kidney) and male/female urogenital epithelial structures, renal coloboma syndrome, and renal-specific stem cells.

### ADDITIONAL DETAILS

Jackson <https://www.jax.org/strain/018437>

### Technology ID

2015-486

### Category

Research Tools and Reagents

### Inventor

Gregory Dressler

### Further information

Emily Bowers

[bowersea@umich.edu](mailto:bowersea@umich.edu)

### Learn more

