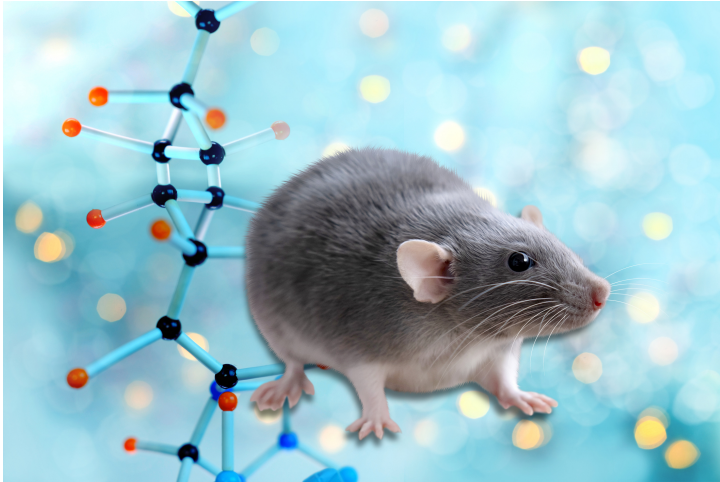




## Mouse Models for Developmental Biology Research (Pitx2flox)

TECHNOLOGY NUMBER: 2015-493



### INNOVATION

These Pitx2flox mice are useful when studying heart, eye, and pituitary gland development.

### ADDITIONAL DETAILS

Jackson <https://www.jax.org/strain/018120>

### Technology ID

2015-493

### Category

Research Tools and Reagents

### Inventor

Sally Camper

### Further information

Emily Bowers

[bowersea@umich.edu](mailto:bowersea@umich.edu)

### Learn more

