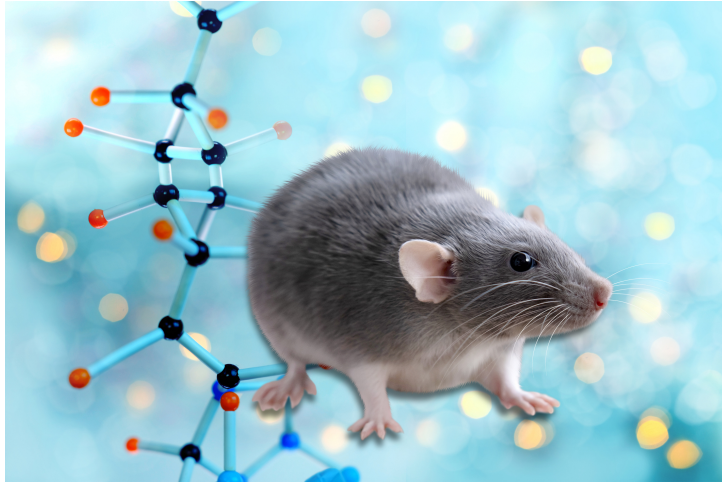




Mouse Models for Internal/Organ and Bone Research (12.4KVil-EGFP)

TECHNOLOGY NUMBER: 2015-498



INNOVATION

12.4KVil-EGFP transgenic mice have the 12.4 kbp mouse villin 1 promoter directing expression of EGFP to villus and crypt epithelial cells, along the entire small intestine and colon, in a cephalocaudal gradient expression pattern similar to endogenous Vil1. These mice may be useful in studying intestinal organogenesis, gastric stem cell biology and cancer.

ADDITIONAL DETAILS

Jackson <https://www.jax.org/strain/028353>

Technology ID

2015-498

Category

Research Tools and Reagents

Inventor

Deborah Gumucio

Further information

Emily Bowers

bowersea@umich.edu

Learn more

