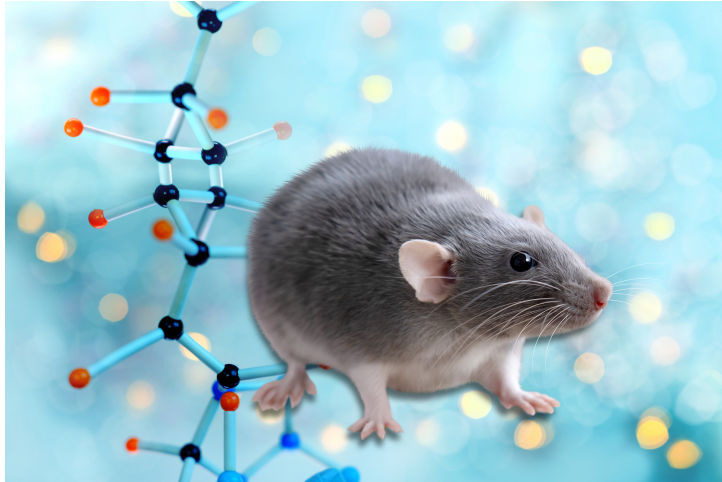




## Mouse Models for Internal/Organ and Bone Research (CDX2P-CreERT2)

TECHNOLOGY NUMBER: 2015-501



### INNOVATION

These mice express Cre-ERT2 under the direction of the human caudal type homeo box 2 (CDX2) gene promoter/enhancer regions. They are useful when studying gene function in adult epithelium of the distal intestinal tract.

### ADDITIONAL DETAILS

Jackson <https://www.jax.org/strain/022390>

### Technology ID

2015-501

### Category

Research Tools and Reagents

### Inventor

Eric Fearon

### Further information

Emily Bowers

[bowersea@umich.edu](mailto:bowersea@umich.edu)

### Learn more

