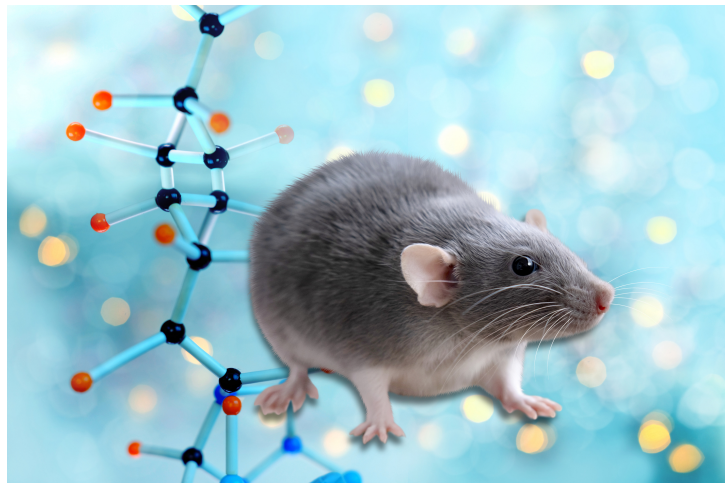




## Mouse Models for Internal/Organ and Bone Research (PthrpmCherry)

TECHNOLOGY NUMBER: 2015-504



### INNOVATION

PthrpmCherry knock-in/knock-out mice are useful for lineage mapping skeletal stem cell lineages.

### ADDITIONAL DETAILS

Jackson <https://www.jax.org/strain/032872>

### Technology ID

2015-504

### Category

Research Tools and Reagents

### Inventor

Noriaki Ono

### Further information

Emily Bowers

[bowersea@umich.edu](mailto:bowersea@umich.edu)

### [View online](#)

