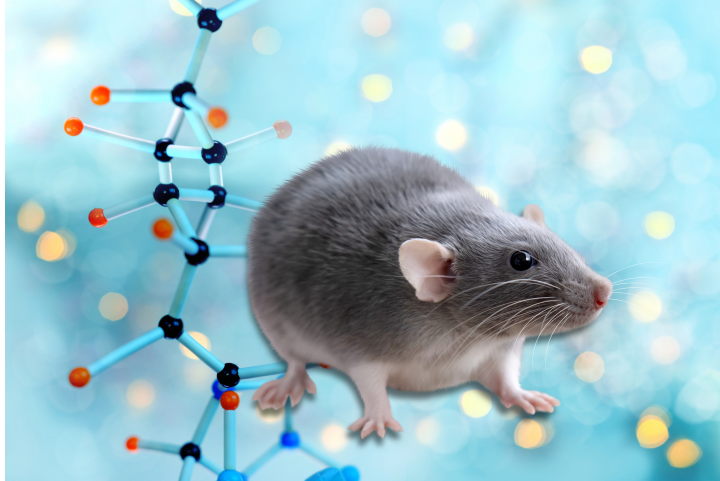




Myers Lab Prlh Mouse Lines

TECHNOLOGY NUMBER: 2022-208



INNOVATION

Mouse lines genetically engineered to express cre recombinase from the Prlh locus (Prlh-cre), or to permit the cre-dependent excision of Prlh gene (Prlh-flox). These mice may be useful for studying feeding behavior, obesity, and metabolism.

ADDITIONAL DETAILS

Jackson <https://www.jax.org/strain/036747> <https://www.jax.org/strain/036748>

Technology ID

2022-208

Category

Research Tools and Reagents

Further information

Emily Bowers

bowersea@umich.edu

Learn more

