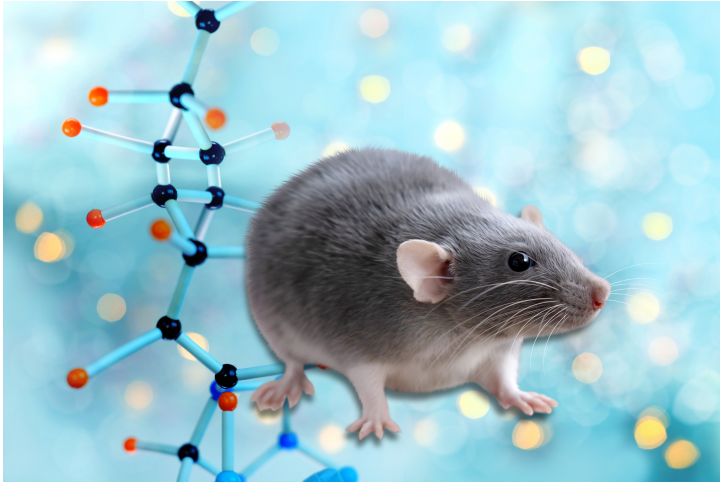




# Pluripotent Mouse Embryonic Stem Cell Line: Pat 5

TECHNOLOGY NUMBER: 1862



## OVERVIEW

An embryonic murine stem cell line that can be used to introduce mutations that will be passed on through the germ line.

## Technology ID

1862

## Category

Research Tools and Reagents

## Inventor

Linda Samuelson  
Thomas Saunders  
Patrick Gillespie

## Further information

Emily Bowers  
[bowersea@umich.edu](mailto:bowersea@umich.edu)

## Learn more

