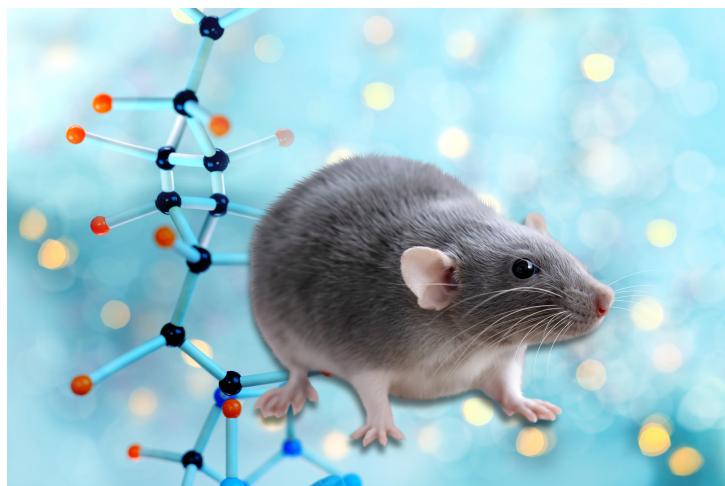




# Syngeneic Model for Tobacco-Associated Squamous Cell Carcinomas

TECHNOLOGY NUMBER: 2021-306



## Technology ID

2021-306

## Category

Life Sciences

## Inventor

Yu Lei

## Further information

John Corthell

[corthell@umich.edu](mailto:corthell@umich.edu)

## Learn more



## OVERVIEW

This is an animal cell line model of oral squamous cell carcinoma. This model is refractory to anti-PD-L1 or anti-CTLA4 immunotherapy to model cancer resistance to immunotherapy.

## ADDITIONAL DETAILS

Order from Kerafast:

<https://www.kerafast.com/item/5697/murine-squamous-cell-carcinoma-cell-line-nooc1>