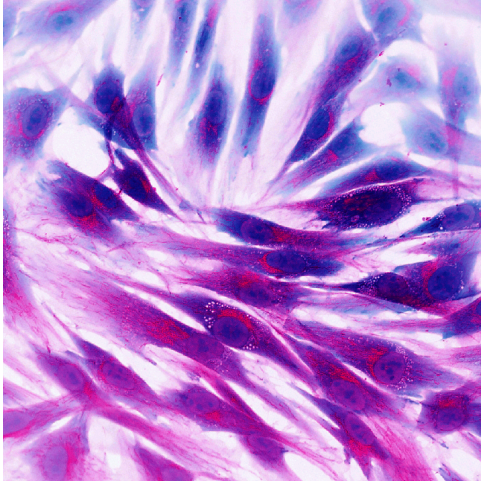




UMCHOR-1, Chordoma Cell Line

TECHNOLOGY NUMBER: 6355



OVERVIEW

Cell line derived from a patient with clival chordoma. This is an excellent model for chordoma research.

ADDITIONAL DETAILS

Available at: ABM ([https://www.abmgood.com/Human-Clival-Chordoma-Tumor-Cell-Line-\(UM-Chor1\).html](https://www.abmgood.com/Human-Clival-Chordoma-Tumor-Cell-Line-(UM-Chor1).html))

Technology ID

6355

Category

Research Tools and Reagents
Life Sciences

Inventor

John Owen
Mark Prince

Further information

John Corthell
corthell@umich.edu

Learn more

